

# SWEET AND LOW

BALLAD

Klaus Lessmann

## INTRO

A (C#min/A) Cmin/A Bmin/A Cmin/A A Cmin/A Bmin/A E7<sup>#11</sup>9 (Bbmin/A)



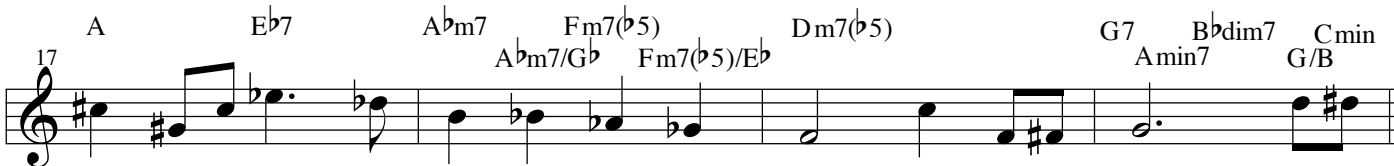
A Dbm7(b5) Cm6 G/B Ab°7 G7 F#m7 F7 Bb Eb7 D D7



Abm7(b5) Gm6 D/F# Eb°7 D7 Dbm7 C7 B7sus4 B7 E E7



B A Eb7 Ab C#7 F#m7 F7<sup>#11</sup>9 E E7



A' Dbm7(b5) Cm6 G/B Ab°7 G7 F#m7 F7 Bb Eb7 D D7



Abm7(b5) Gm6 D/F# Eb°7 D7 C#m7 F#m7 Bm7 E7 A Cmin/A



Bmin/A Cmin/A A Cmin/A Bmin/A E7<sup>#11</sup>9 CODA (LAST TIME ONLY) Amaj7#11

